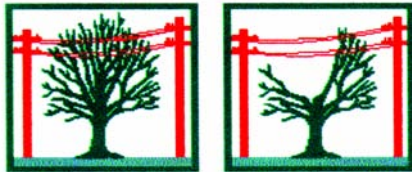


# PLANTING TREES NEAR POWER LINES

When deciding on trees as part of a landscape design, remember to consider the height of the tree at maturity if overhead power lines are present.

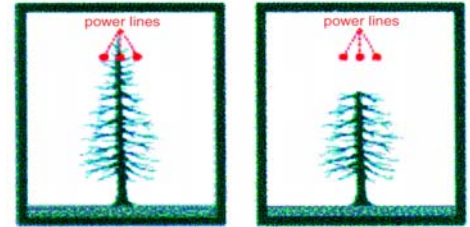
To avoid conditions like those shown in the illustrations below (*fig. 1-3*), plant trees that have a mature height of 20 feet or less when near power lines, so that at maturity, they will not reach overhead wires.



*Fig 1. Example of top direct trimming done to trees with a decurrent growth habit.*

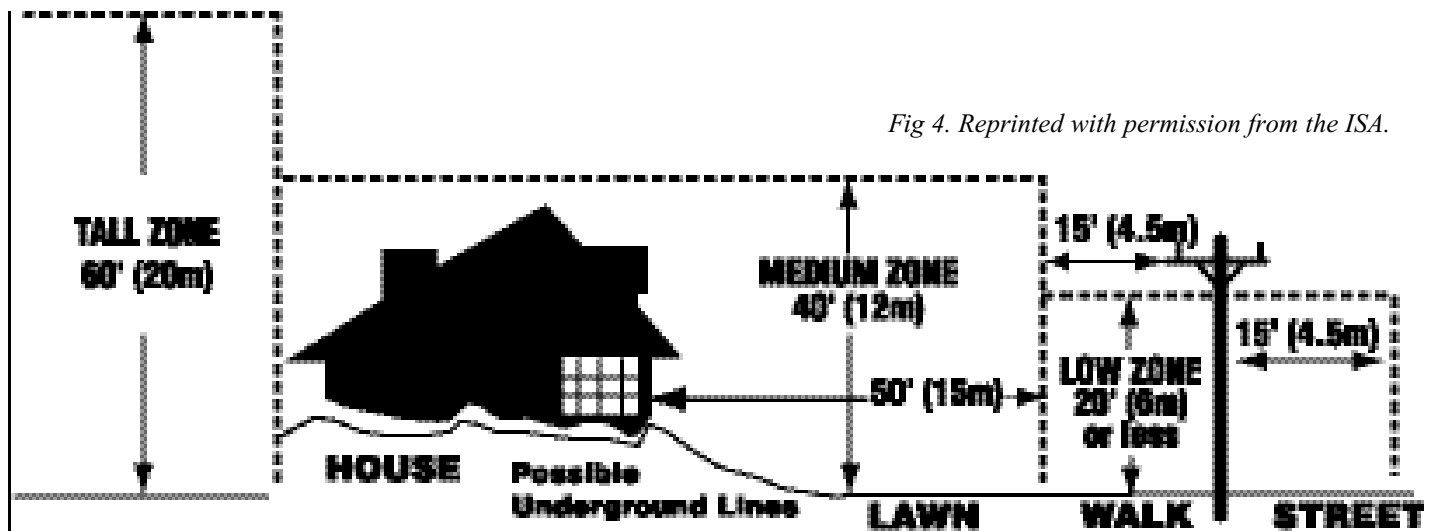


*Fig 2. Example of side trimming.*



*Fig 3. Example of top pruning done to redwoods and other trees with an excurrent growth habit.*

The International Society of Arboriculture (ISA) recommends planting medium size trees, those that reach up to 40 feet at maturity, at least 15 feet or more to the side of overhead power lines and taller trees, those reaching up to 60 feet, at an even greater distance (see *fig. 4* below).



*Fig 4. Reprinted with permission from the ISA.*

There are thousands of species of trees in the world and countless varieties to choose from. For complete information on how to select tree species, visit the International Society of Arboriculture at [www.isa-arbor.com](http://www.isa-arbor.com) or call 1 (888) 472-8733, the Urban Forest Ecosystems Institute at [www.ufe.org](http://www.ufe.org) or call (805) 756-5171 and Pacific Gas and Electric Company's SafeTree at [www.safetree.net](http://www.safetree.net) or E-mail [info@safetree.net](mailto:info@safetree.net).

Before planting trees, notify Underground Service Alert at least two work days before digging at 1 (800) 227-2600 or go to [www.usanorth.org](http://www.usanorth.org). For more information about planting trees under power lines, visit Pacific Gas and Electric Company at [www.pge.com](http://www.pge.com), call 1 (800) 743-5000 or contact your local electric company.