



# Living With Fire in Santa Clara County

## Santa Clara County FireSafe Council Develops Two Community Wildfire Protection Plans



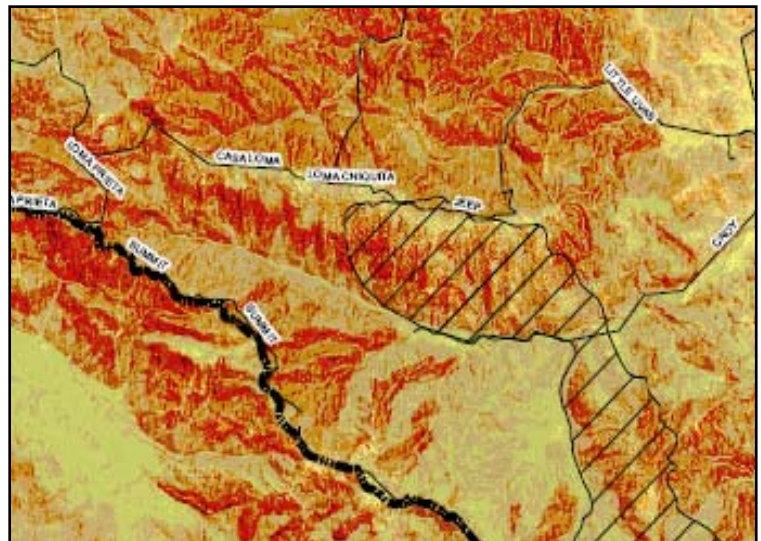
The Santa Clara County FireSafe Council has developed two Community Wildfire Protection Plans (CWPPs) for wildfire prone areas of East Foothills, Gilroy, Morgan Hill, San Martin and south and east San Jose. These communities are all Communities at Risk from wildfires as defined by the California Fire Alliance.

“By developing these plans, we raised community awareness and involved local fire agencies in the wildfire protection planning process. These plans have already enabled us to secure more federal grant money for Santa Clara County,” said Pat Congdon, president of the Santa Clara County FireSafe Council (SCFSC).

The plan’s goals were three-fold:

- Reduce wildfire hazards within Wildland Urban Interface areas
- Educate the community about existing hazards to prompt homeowners and community volunteers to help reduce fuels
- Secure additional grant funding for major fuel reduction projects

The result is two CWPPs that provide a template for other CWPPs for Santa Clara County and other area Fire Safe Councils in California.



**Fire Hazard Areas in the Croy Fire Area CWPP**

Plan development included modeling potential fire behavior and assessing and prioritizing hazards. “Modeling the assessed area was interesting because it contains many different types of fuels from light, flashy grasses to chaparral to conifer forests,” said Michael Huff, Dudek’s urban forestry services manager, who worked with SCFSC to develop these CWPPs.

To analyze fire behavior, the team used fire modeling software and a geographic information system (GIS) to graphically portray fire behavior and fire risk on colorful, high resolution maps. The GIS maps illustrate the risk based on factors such as slope, aspect, vegetation type, and weather and the weighting of these factors according to their fire-prone susceptibility.

SCFSC and Dudek worked with local stakeholders, the San Jose Fire Department and California Department of Forestry and Fire Protection (CAL FIRE) to meld their area knowledge and expertise into the CWPPs.

**For More Information:** Contact Allan Thompson for SCFSC at [AllanT@SCCFireSafe.org](mailto:AllanT@SCCFireSafe.org), phone (408) 272-7008, or Michael Huff for Dudek at [mhuff@dudek.com](mailto:mhuff@dudek.com), phone (760) 479-4836. The mission of the Santa Clara County FireSafe Council is “Mobilizing the people of Santa Clara County to protect their homes, communities and environment from wildfires.” Please visit our Web site at [www.SCCFireSafe.org](http://www.SCCFireSafe.org). CWPP development funding was provided by a National Fire Plan grant from the Bureau of Land Management through the California Fire Safe Council.